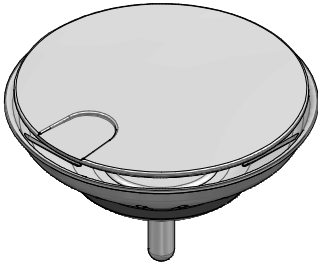


1CPI

DESCRIZIONE Copripiletone in acciaio inox
DESCRIPTION Stainless steel drain cover

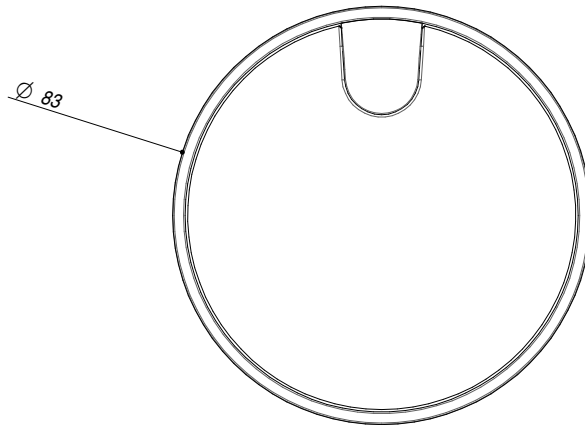
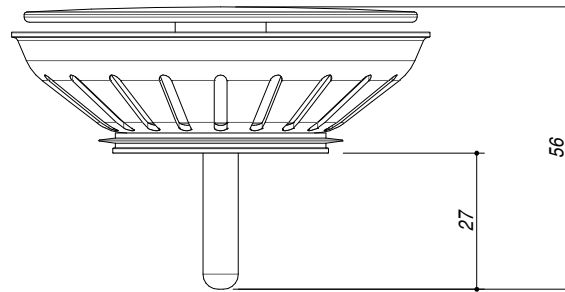
PESO LORDO 0.1 kg
GROSS WEIGHT

DIMENSIONI IMBALLO 100x100x100 mm
PACKAGING DIMENSIONS



ACCIAIO INOX
Stainless steel

- Per lavelli e vasche quadre con pilettoni 3"1/2 (For sinks and square bowls with 3.5 basket strainer waste)



SCALA DISEGNO 1:1.5
DRAWING SCALE

TUTTE LE MISURE IN mm
ALL MEASURES IN mm

TOLLERANZA LINEARE: ± 0.5 mm
LINEAR TOLLERANCE

TOLLERANZA ANGOLARE: ± 0.2 °
ANGULAR TOLLERANCE

PER QUALSIASI CONTESTAZIONE SI FARA' RIFERIMENTO ESCLUSIVAMENTE A QUESTO DISEGNO
 For any dispute the company will refer exclusively to this drawing

BARAZZA Barazza s.r.l. - Via Risorgimento, 14 - 31025 Sarano dS, Lucina di P. (TV) Italy
 Tel. +39/0438/62888 - Fax +39/0438/64901 info@barazzasrl.it - www.barazzasrl.it
 Documento di proprietà aziendale. La Società tutelerà i propri diritti a termini di legge.

